

## Who we are:

Farm Safety Nova Scotia (FSNS) works with Nova Scotia farms to keep farmers, their families, and their employees safe. It is our goal to ensure farmers have access to the tools and resources they need to operate safe and productive farms.

FSNS, a not-for-profit society, is an industry-driven organization working in the best interest of its members. All registered farm members of the Nova Scotia Federation of Agriculture are voting members of FSNS, who can participate in member meetings, and provide direction on our mandate. However, whether a voting member or not, all registered farms can access services from FSNS.

## VISION

*A culture of health and safety where every decision made on Nova Scotia farms begins with safety.*

## MISSION

To promote and support health and safety practices within our farm community.

## Contact Us

7 Atlantic Central Drive,  
East Mountain, Nova Scotia B6L 2Z2  
Phone: 902-893-2293  
Email: [info@farmsafetyns.ca](mailto:info@farmsafetyns.ca)  
Web: [farmsafetyns.ca](http://farmsafetyns.ca)

This PassBook is a fillable PDF. Click on a line and start typing.

**CORE SERVICES:** Advocacy, Awareness, Resource Development, and Training and Education.

# Passport to Safety



NAME: \_\_\_\_\_

# Course Descriptions

## Intro to Farm Safety

This online or in-class introduction to safety on the farm will include: A discussion on why safety is important on the farm; Farm safety Policies; Roles and responsibilities of everyone on the farm; Possible Hazards and the control measures for those hazards; Training requirements; Types of incidents and how to manage them; Emergency Response planning; and Communicating Farm Safety. Available in English and Spanish.

## WHMIS 2015

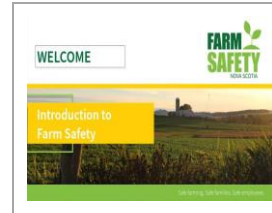
This course is designed to educate a worker, supervisor or manager on the major elements of the WHMIS Program. The student is taught how to implement a WHMIS Program in compliance with existing legislation. Every effort will be made to address concerns to the participants' requirements. Available in English and Spanish.

## Gear Up for Ag

Is an interactive program involving personal protective equipment for many types of agricultural exposures with discussion of appropriate Personal Protective Equipment (PPE) for individual exposures. There is a resource discussion and distribution including local and regional resources as well as distribution of PPE Startup Kit worth up to \$75.

# Safety Courses

## Intro to Farm Safety



Date Taken: \_\_\_\_\_

Notes: \_\_\_\_\_

\_\_\_\_\_

\_\_\_\_\_

## WHMIS 2015



Recertification period is every 3 years.

Expiry: \_\_\_\_\_

Expiry: \_\_\_\_\_

## Gear Up for Ag



Date Taken: \_\_\_\_\_

Notes: \_\_\_\_\_

\_\_\_\_\_

\_\_\_\_\_

# Course Descriptions

## Tractor Safety Awareness

This course is designed for new and experienced operators. The course focuses on hazards related to tractor operation, PTO safety, hitching and unhitching trailers and implements, hydraulics, weight distribution and common causes of rollovers. The in-class course includes a practical portion which involves conducting a pre-trip inspection, hitching and unhitching and scenarios. This information is to be used in conjunction with the operator's manual.

## Skidsteer Safety Awareness

This course is designed for new and experienced operators. The course focuses on hazards related to skidsteer operation, legislative requirements in NS, pre-trip inspections, mounting/dismounting, knowledge of controls, visual clearance checks and position of the skidsteer to work, bucket position, correct use of attachments, speed and control turning and correct shut down. This information is to be used in conjunction with the operator's manual

## Farm Implement Operation

The course focuses on hazards related to implement operation, review of tractor operation, PTO safety, instrumentation, hitching and unhitching implements and trailers, hydraulics, and weight distribution. This information is to be used in conjunction with the operator's manual.

# Safety Course

## Tractor Safety Awareness



Date Taken: \_\_\_\_\_

Notes: \_\_\_\_\_

\_\_\_\_\_  
\_\_\_\_\_

## Skidsteer Safety Awareness



Date Taken: \_\_\_\_\_

Notes: \_\_\_\_\_

\_\_\_\_\_  
\_\_\_\_\_

## Farm Implement Operation



Date Taken: \_\_\_\_\_

Notes: \_\_\_\_\_

\_\_\_\_\_  
\_\_\_\_\_

# Course Descriptions

## Road Safety

Provide an overview of the Transportation Guidelines for Nova Scotia Farmers and provide you with an opportunity for questions. This session is delivered by Outreach Officers of Vehicle compliance with representatives in attendance from FSNS and NSFA or online through the FSNS website.

## Animal Handling

Participants will learn the importance of low stress handling techniques, smart facility design and natural behaviour of cattle. Low stress handling and facility design are critical for both the safety and welfare of the animals and people.

## Pesticide Safety

Pesticide use may be required in various agriculture farming practices as a means to control pests that can be harmful to crops. This program outlines hazards associated with pesticide use, how to protect yourself while using pesticides, overview of applications, exposure, and review of regulations. To be used in conjunction with product label and available safety data sheets.

# Safety Courses

## Road Safety



Date Taken: \_\_\_\_\_

Notes: \_\_\_\_\_

---

---

## Animal Handling



Date Taken: \_\_\_\_\_

Notes: \_\_\_\_\_

---

---

## Pesticide Safety



Date Taken: \_\_\_\_\_

Notes: \_\_\_\_\_

---

---

# Course Descriptions

## Chainsaw Safety

This course focuses on safe practices and procedures for handling and operating chainsaws. It is a comprehensive classroom program suitable for both experienced and novice operators. Uses Forestry Professional Guideline. Practical exercises will be conducted under controlled conditions. This information is to be used in conjunction with the owner's manual.

## First Aid

Emergency First Aid teaches lifesaving first aid skills needed to sustain life and manage the scene of an injury. Emergency First Aid is recommended for worksites with 1-19 employees per shift or anyone who is working alone must have emergency first aid. The recertification period for this first aid certificate is every three (3) years

## Forklift

This course focuses on safe practices, and procedures for operating forklifts suitable for both experienced and novice operators. Participants are given practical training and a practical operator assessment on a functional forklift. Upon successful completions of all portions of this course participants will be qualified forklift operators. This information is to be used in conjunction with the operator's manual.

# Safety Course

## Chainsaw Safety



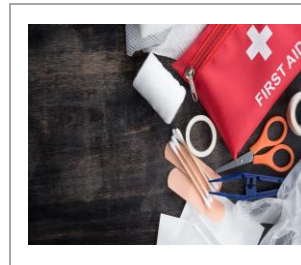
Date Taken: \_\_\_\_\_

Notes: \_\_\_\_\_

\_\_\_\_\_

\_\_\_\_\_

## First Aid



Recertification period is every 3 years.

Expiry: \_\_\_\_\_

Expiry: \_\_\_\_\_

## Forklift



Recertification period is every 3 years.

Expiry: \_\_\_\_\_

Expiry: \_\_\_\_\_

Expiry: \_\_\_\_\_

# Course Descriptions

## Confined Space

The participants will learn about the hazards of working in confined spaces, and the protective measures and equipment that help ensure a safer working environment.

## Lockout

This course is designed to ensure that your farm can develop a lockout system that complies with the applicable legislative requirements and industry best practices.

## Fall Protection

The goal of this course is to ensure participants know why it is important to have a fall protection procedure in place. This course engages participants with a mix of instructor presentations, class discussion and practical demonstrations using fall arrest equipment. This information is to be used in conjunction with the manufacturer's specifications.

# Safety Courses

## Confined Space



Recertification period is every 3 years.

Expiry: \_\_\_\_\_

Expiry: \_\_\_\_\_

Expiry: \_\_\_\_\_

## Lockout



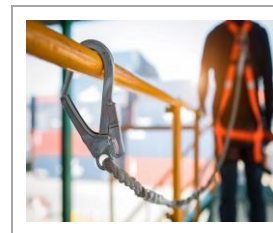
Date Taken: \_\_\_\_\_

Notes: \_\_\_\_\_

\_\_\_\_\_

\_\_\_\_\_

## Fall Protection



Recertification period is every 3 years.

Expiry: \_\_\_\_\_

Expiry: \_\_\_\_\_

Expiry: \_\_\_\_\_

# Course Descriptions

## Endorsement Testing

Condition 15 - Haul a trailer over 4,500kg with a truck or tractor. The combination vehicle weight is restricted based on your license class: combined with a Class 5 – combined vehicle weight up to 14,000kg and combined with a Class 3 – combined vehicle weight can be over 14,000kg.

Condition 23 – Haul and implement with a tractor with a combination weight over 14,000kg. Applies to tractor combination only. Must hold a minimum Class 5R license. Requires a medical. May be on licenses as Class 3R, Class 3 or Class 5, endorsement will be noted on the back of license.

## Add Your Own Course

---

---

---

## Add Your Own Course

---

---

---

# Safety Courses

## Endorsement Testing



Condition 15:  
Date Certified: \_\_\_\_\_

Condition 23  
Date Certified: \_\_\_\_\_

## Add Your Own Course

Course Name: \_\_\_\_\_

Date Certified: \_\_\_\_\_

## Add Your Own Course

Course Name: \_\_\_\_\_

Date Certified: \_\_\_\_\_